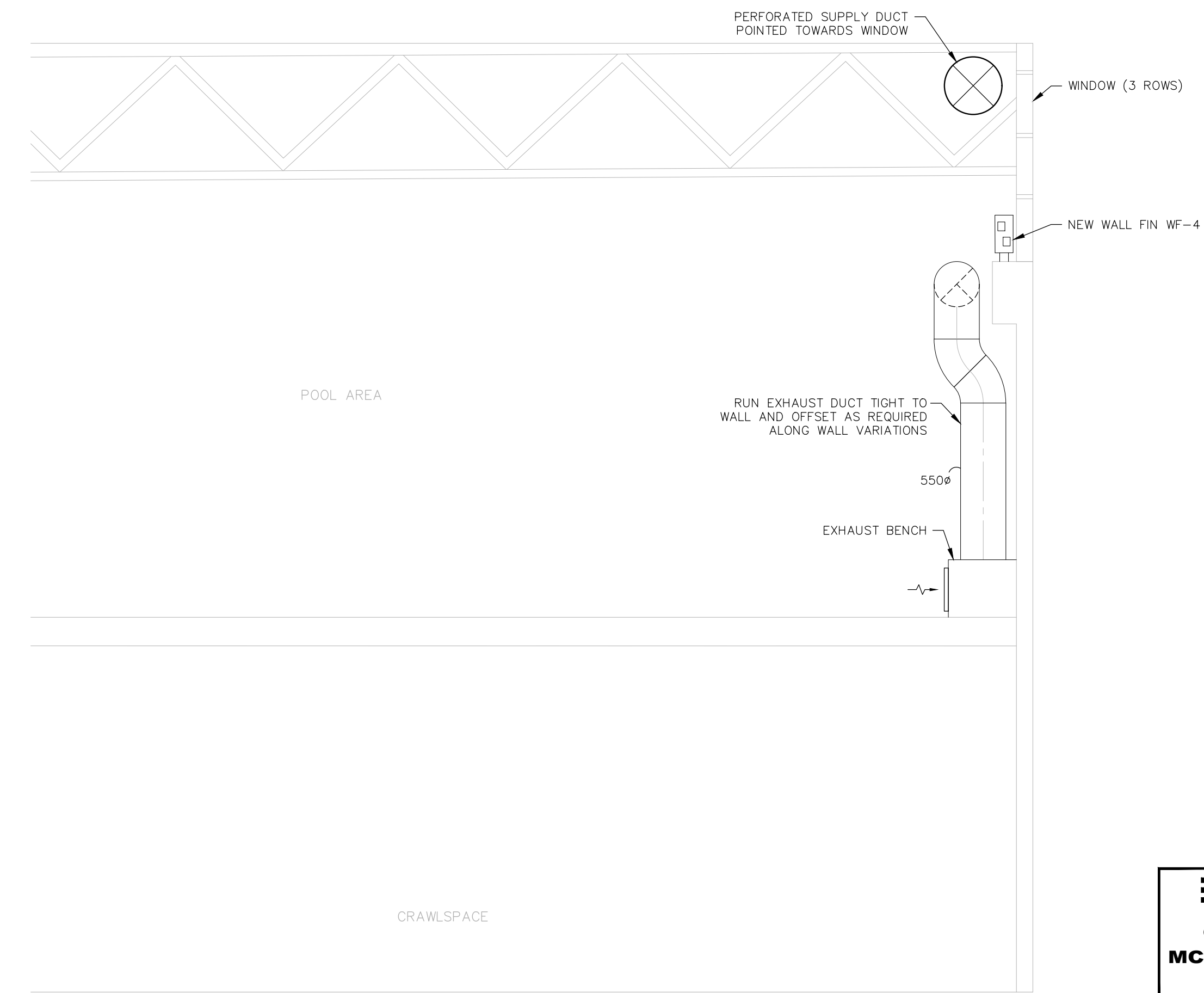


1 SECTION VIEW
M5.2 SCALE: 1:50

DRAWINGS NOTES:

① HEAT RECOVERY PIPING TO BE HEAT TRACED WITH A POWER SOURCE AND CONTROLS FROM INSIDE THE BUILDING CRAWLSpace. HEAT TRACE TO BE RAYCHEM SELF MODULATING CABLE COMPLETE WITH NEMA 4X RAYCHEM CONTROLLER LOCATED WITHIN CRAWLSpace. CONTROL PANEL TO BE RAYCHEM ELEXANT 40101 COMPLETE WITH ALARM BACK TO DDC SYSTEM (CONTROLLER TO ALSO CONTROL CONDENSATE DRAIN HEAT TRACE, REFER TO M4-0 FOR DETAILS). HEAT TRACE CABLE TO RUN WITHIN THE PIPING AND INCLUDE A FLUID TEMPERATURE SENSOR ON PIPING LOCATED OUTDOORS. ROUTE CABLE TO RUN WITHIN PIPE THROUGH CABLE END SEAL. PIPING TO HAVE 50MM RIGID PIPE INSULATION AND BANDED ALUMINUM RECOVERY JACKET. ALL PIPING OUTDOORS TO BE STAINLESS STEEL.



2 SECTION VIEW
M5.2 SCALE: 1:50

DRAWINGS NOTES 3/M5.2:

① DUCT TO CONNECT TO EXHAUST AIR PLENUM WITHIN BENCH. MAKE CONNECTION COMPLETE WITH STEEL COLLAR FITTING. REFER TO ARCHITECTURAL FOR DETAILS.

② RECESSED BOX FOR POOL FILL PLUMBING ACCESS. REFER TO ARCHITECTURAL FOR DETAILS.

③ ALL DUCTWORK AT LOW LEVEL TO BE 16 GAUGE STEEL. REFER TO ARCHITECTURAL FOR EXTENT OF PAINT COLOR.

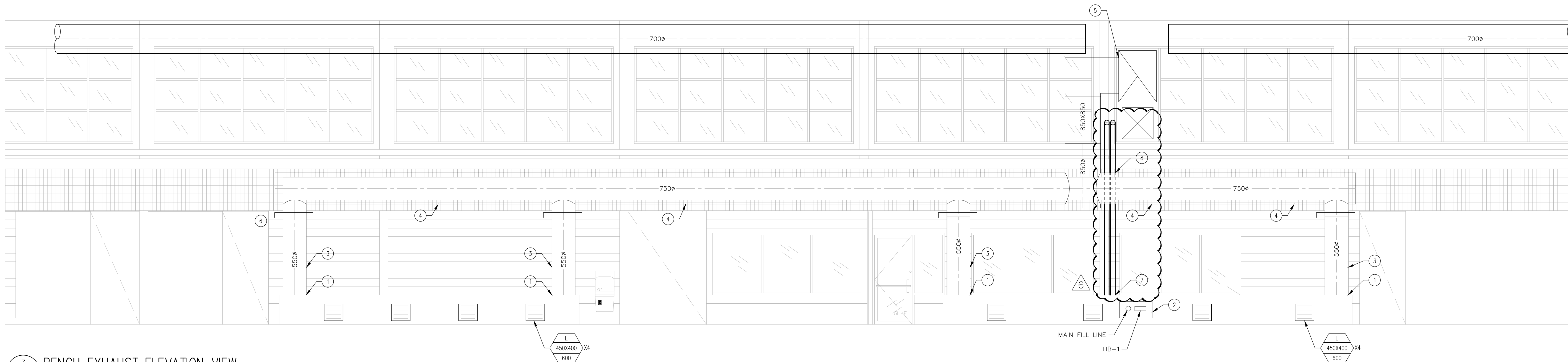
④ SPIRAL EXHAUST AIR DUCTWORK. REFER TO ARCHITECTURAL FOR EXTENT OF PAINT COLOR.

⑤ CONNECT NEW EXHAUST AIR DUCTWORK TO EXISTING HRV EXHAUST AIR MAIN.

⑥ INSTALL BALANCING DAMPER AT HIGH LEVEL SET TO 1200 L/S EACH (TYPICAL).

⑦ 65MMØ HYDRONIC PIPING COMPLETE WITH WRAPPED THERMAL INSULATION TO RUN UP THROUGH BENCH FROM CRAWLSpace BELOW AND UP ALONG WALL SIDE BY SIDE SOUTH OF GRIDLINE B. REFER TO ARCHITECTURAL FOR ADDITIONAL DETAILS. PIPE TO RISE TO HIGH LEVEL AND OFFSET TO CONNECT TO HEATING COIL HC-17 AS SHOWN ON MECHANICAL DRAWING M6.1.

⑧ COORDINATE INSTALLATION OF EXHAUST AIR DUCT WITH HYDRONIC PIPING FROM BELOW TO ALLOW TO PASS BETWEEN WALL AND DUCT. SIZE WALL HANGERS APPROPRIATELY TO SUPPORT DUCT PUSHED AWAY FROM WALL. REFER TO ARCHITECTURAL FOR ADDITIONAL DETAILS.



3 BENCH EXHAUST ELEVATION VIEW
M5.2 SCALE: 1:50



216-1821 Wellington Avenue
Winnipeg, Manitoba, R3B 0G4
Phone: (204) 779-7900
mcw_agg@mcw.com
www.mcw.com

MCW
13600
MCW Consultants Ltd.

2	JULY 13, 2022	ISSUED FOR ADD#06
1	JUNE 21, 2022	ISSUED FOR CONSTRUCTION
No.	Date	Issue / Revision

Drawn By: EJ
Printing Date:

Drawings and specifications, as instruments of service are the property of the architects, the copyright in the same being reserved to them. No reproduction may be made without the permission of the architects, and when made, must bear their names. All prints to be returned.

The contractor is to verify dimensions and data noted herein with conditions on the site and is held responsible for reporting any discrepancy to the architects for adjustment.

LM LM Architectural Group
500-136 Market Ave
Winnipeg, Manitoba, Canada R3B 0P4
t: (204) 942.0681 f: (204) 943.8676
www.lm-architects.com

**CITY OF WINNIPEG
BONIVITAL POOL RENEWAL**

1215 Archibald St, Winnipeg, MB.

SECTIONS